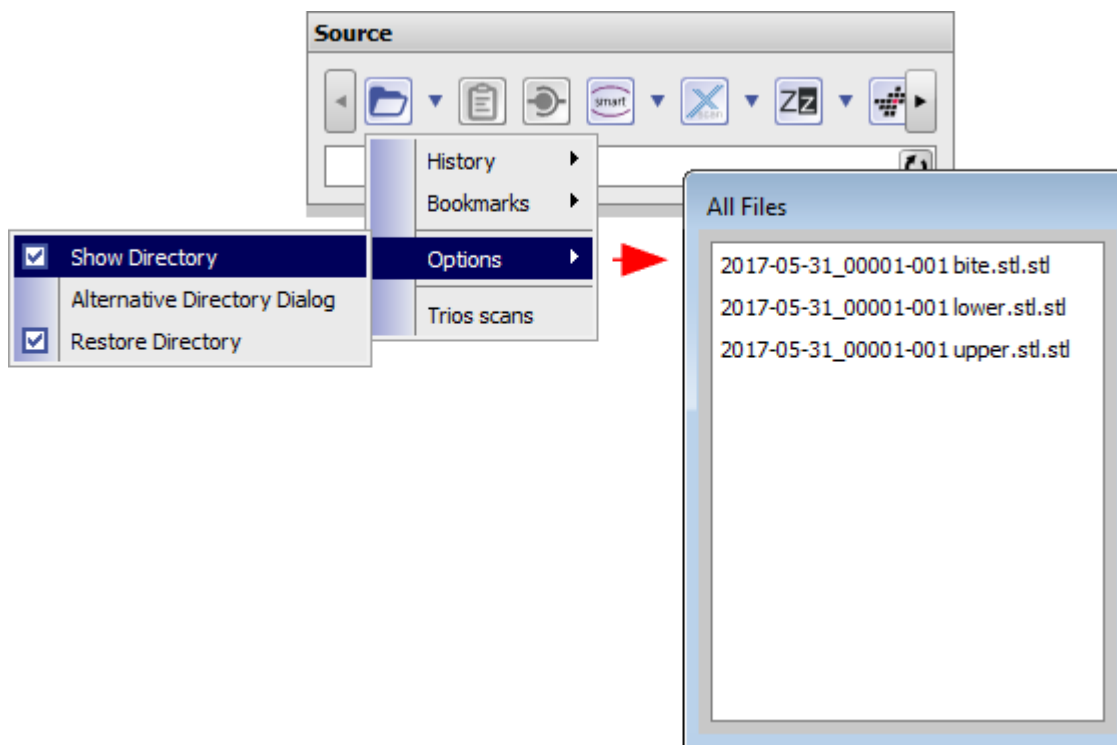


#4071 Add Image: File-Preview while Folder Selection

To import 2D/3D images to OnyxCeph³™ from a folder, this folder has to be selected in module Add Image by the corresponding icon button in panel Source . The related Explorer window will only show the folders but not, as expected, the file content of each folder.

To display the contained files anyway, icon context menu option [Show Directory] can be used.

Alternatively the *old fashion* folder selection dialog can be activated by option [Alternative Directory Dialog] if still supported by the locally used Windows™ version.



From:
<http://www.onyxwiki.net/> - [OnyxCeph³™ Wiki]

Permanent link:
<http://www.onyxwiki.net/doku.php?id=en:4071>

Last update: **2017/06/13 14:58**

