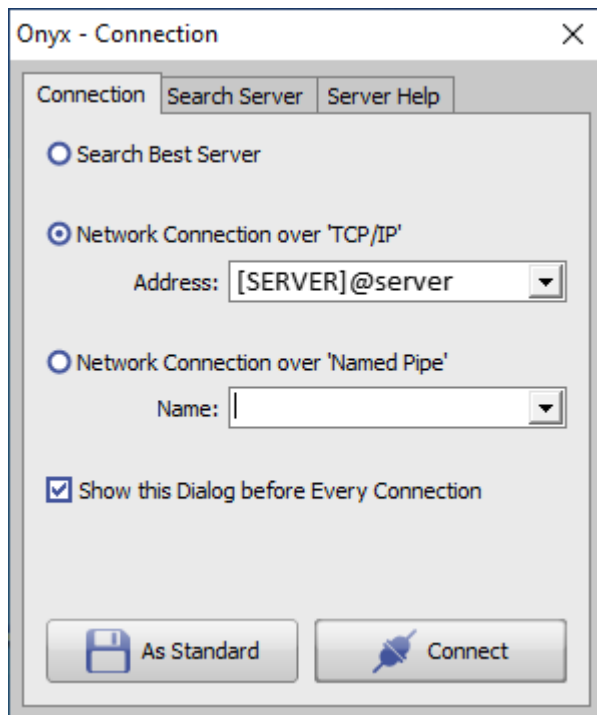


Window Onyx Server Connection

Tab Connection



Window Onyx Server Connection will be optionally displayed each time a local Onyx client application tries to establish a connection to the onyx database. To connect, different [connection types](#) can be used:

- Search Best Server
- Network Connection over [TCP/IP](#)
- Network Connection over ["Named Pipes"](#)

By default, IP-Port 16300 will be used for the Client/Server connection. If used by another program or not available for other reasons, in program window [OnyxDBserver](#) and corresponding on tab [Search Server] in window [Onyx Server Connection](#) an alternative port number can be configured.

Option Search Best Server

If this option is selected, the network will be searched for the running Onyx database servers and the one found first will be used to connect. Selecting this option is no recommended.

Option Network Connection over TCP/IP

This is the recommended connection protocol for communication between client application and Onyx database server.

Syntax:

[ServerPC -name]@ServerPC -name - e.g. [Server2012]@Server2012

[ServerPC -name]@{IP -Adresse} - e.g. [Server2012]@192.168.135.20

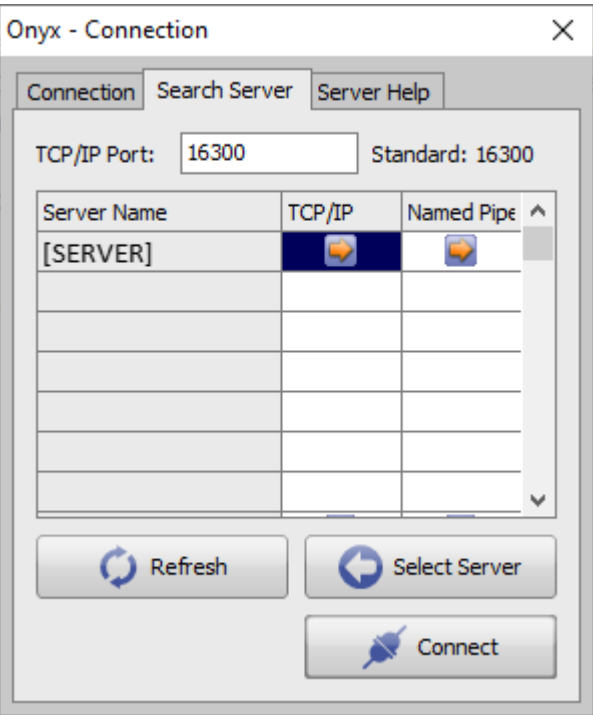
Client/server connection type and data are saved as standard in the client computer registry when first time applied. Thereafter, the Onyx Server Connection window will not come up again. The window can be forced to show up again if button [CTRL] is pressed while the appropriate client application is launched. By checkbox [Show this Dialog Before Every Connection] on tab |Connection| the permanent appearence of the connection window each time a client application is launched can be set up. This might be useful especially if a client should connect alternately to different database instnaces running in the same network.

To replace the registry setting for the standard connection, the client applicaton needs to be launched with administator permissions. After the new connection is selected, it can be posted to the registry by button [As Standard].

Option Network Connection over "Named Pipes"

Connection type Named Piepes (FIFO) should only be applied if the connection via TCP/IP could not be established successfully.

Tab Search Server



Tab |Serach Server| can be used to search the local network for running Onyx database servers. In a large network environment it might be required to repeat the database search process by button [Refresh]. If even on refresh a running Onyx database server is not replying, the connection should be set up manually on tab |Connection|. The selected connection (line) and connection type (column) can be handed over to tab |Connection| by button [Select Server] or can be applied immediately to connect by button [Connect].

**Note**

To use the client/server communication over the IP port set up top on tab *Search Server* this port number may not be blocked at either end by firewall restrictions. It is recommended to enable port 16300 (or even the alternative portnumber) in the extended firewall settings inbound and outbound explicitly by a separate rule.

From:

<http://onyxwiki.net/> - [OnyxCeph³™ Wiki]

Permanent link:

http://onyxwiki.net/doku.php?id=en:wdw_serverconnection

Last update: **2021/06/05 08:12**

