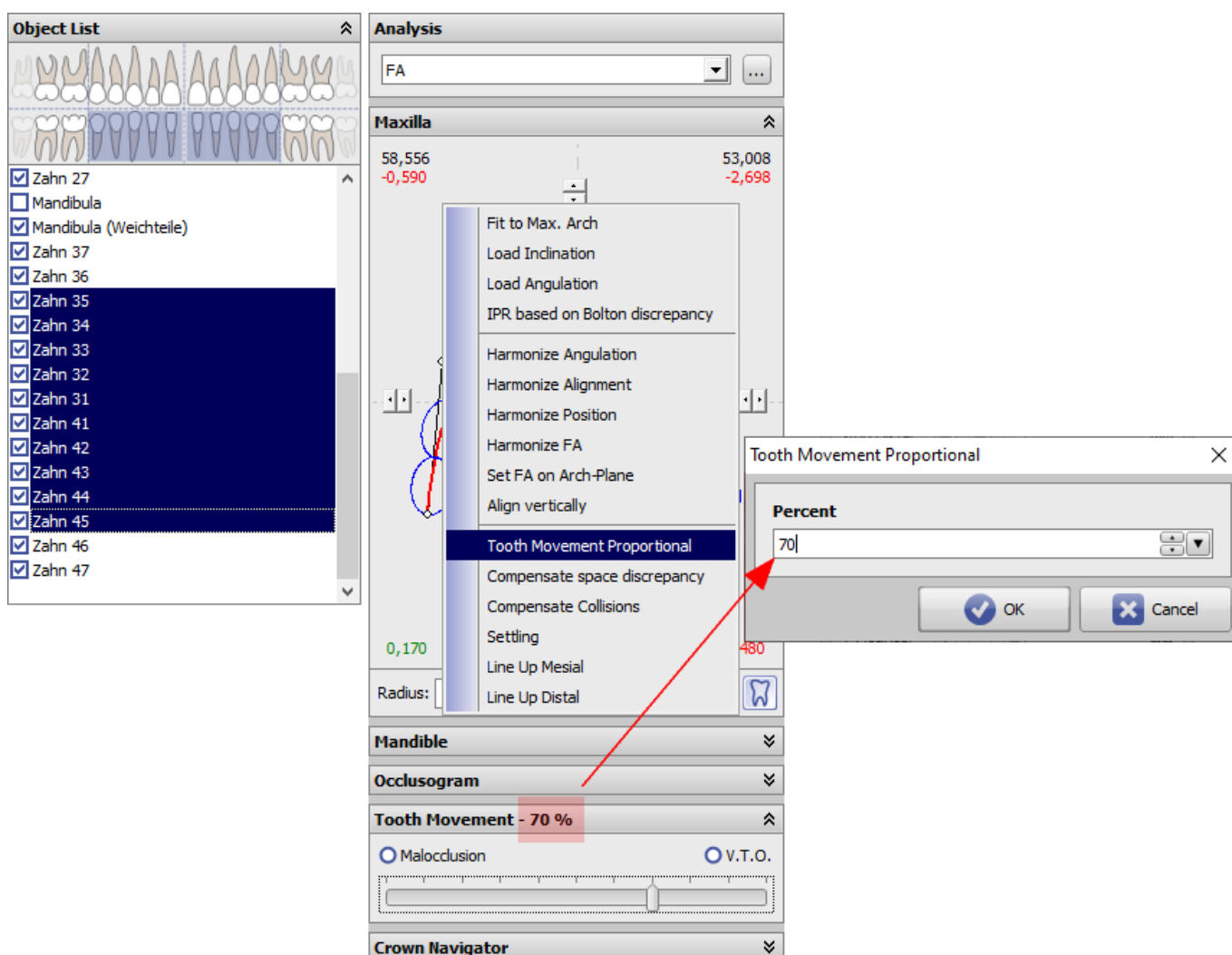


Module V.T.O.3D: Revision 3.2.169

Option Tooth Movement Proportional

[#6325] One available goal planning strategy in the V.T.O.3D module is to first set up the "geometrically ideal" Tx goal without considering physiological limits. This can be done very quickly using a customized toolbar. Using the tooth movement limit values predefined in the limit value table, an acceptable compromise can be found by moving the slider in the timeline in the direction of malocclusion, which must then of course be postprocessed.

For this purpose, as of releases >3.2.157, a new context menu entry [Tooth movement Proportional] is provided at the [Icon] of the crown-related tools in both jaw panels. The function is thereby applied to the crowns selected in the object list.



Hint: Slider in the timeline must be reset to the right (V.T.O.) to use the function.

From:

<https://onyxwiki.net/> - **[OnyxCeph³™ Wiki]**

Permanent link:

<https://onyxwiki.net/doku.php?id=en:6325>

Last update: **2021/11/30 08:57**

