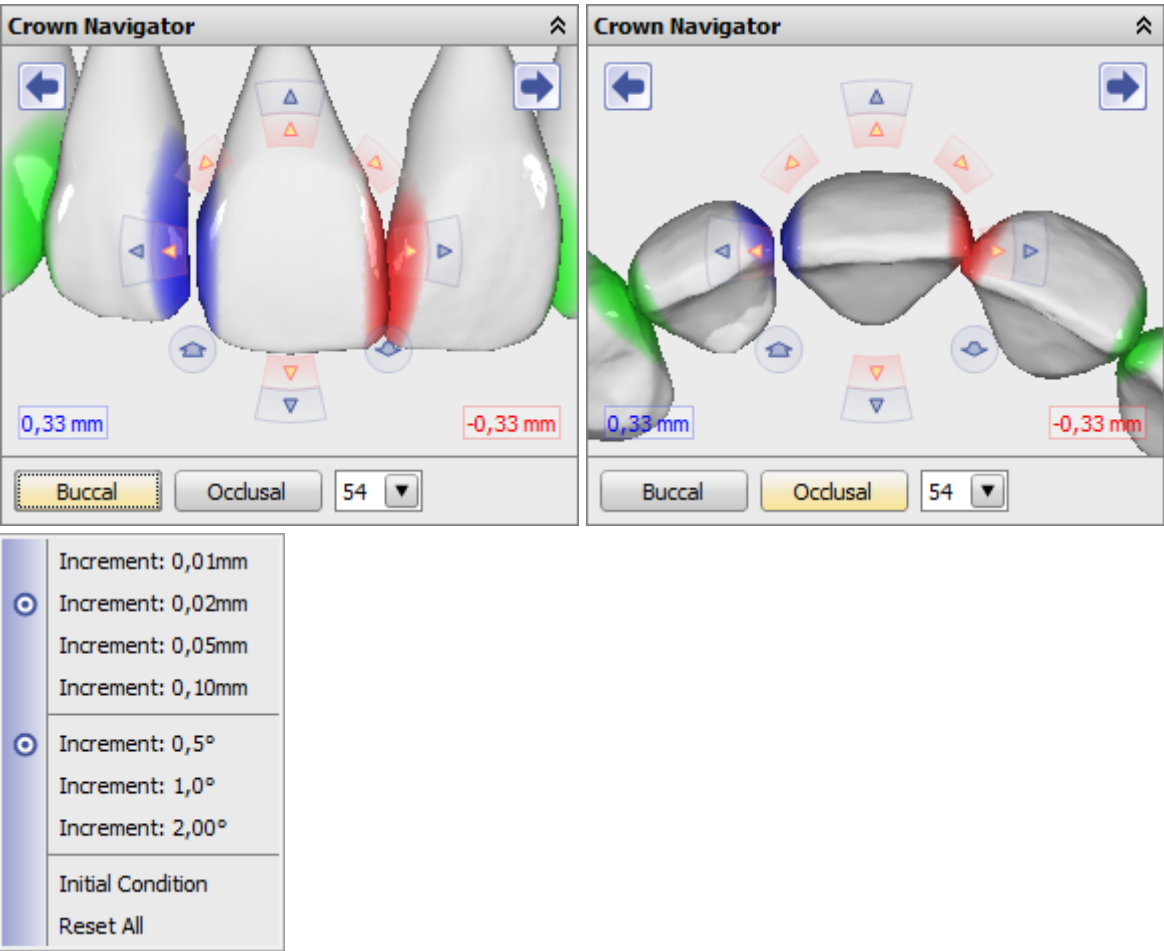


#3832 Keyboard Control Crown Navigator

For releases > 3.2.52, the graphic navigator component (crown navigator, bracket navigator, attachment navigator) can be controlled by keyboard commands:



Numeric keyboard buttons	
[0]/[Ins]	Change view direction (occlusal / buccal)
[2]/[8]	Rotation by X-Axis - w/o [Num] or +[Shift]: Translation along Y-Axis
[4]/[6]	Rotation by Y-Axis - w/o [Num] or +[Shift]: Translation along X-Axis
[7]/[9]	Rotation by Z-Axis
[1]/[3]	Translation along Z-Axis
[+]/[-]	Next/previous crown
Cursor buttons	
[←]/[→]	Translation along X-Axis
[↑]/[↓]	Translation along Y-Axis
Function buttons ¹	
[F2]	Single View Upper Jaw (occlusal)
[F3]	Single View Lower Jaw (occlusal)
[F4]	4-Panel-View
[F5]	Single View Upper and Lower Jaw (frontal)
[F6]	6-Panel-View
Misc ¹	

Numeric keyboard buttons

[Ctrl]+[1]	Display Upper and Lower Jaw in all Views
[Ctrl]+[2]	Display Lower Jaw in all Views
[Ctrl]+[3]	Display Upper Jaw in all Views

¹ Independent from the cursor focus on the navigator panel

Hint

At the moment, keyboard commands are not accepted while the cursor focus is on any 3D view panel. Therefore, another control panel has to be focussed first.

From:

<https://onyxwiki.net/> - **[OnyxCeph³™ Wiki]**

Permanent link:

<https://onyxwiki.net/doku.php?id=en:3832>

Last update: **2021/06/25 16:07**

